

Returning Your Mail Ballot

Mail ballots may be returned to the Supervisor of Elections Office by mail or in person. During business hours, mail ballots may be placed in the secure ballot intake station "dropbox" located inside our office. However you choose to return your ballot, it must be received in the Elections Office by 7 PM on Election Day.

A VOTE BY MAIL BALLOT CANNOT BE ACCEPTED AT A POLLING PLACE. However, they may be accepted at an Early Voting location during the Early Voting period.

Early Voting

Early Voting begins 10 to 15 days prior to each election. Early Voting will end the Saturday before Election Day. Any registered voter may voter in person at any one of our Early Voting sites. For a list of Early Voting sites and current wait times, visit EarlyVoteClay.com

Primary Election Early Voting: TBD
General Election Early Voting: TBD

Election Workers

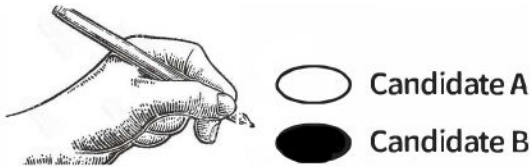
Election Workers must:

- Be registered to vote in Clay County.
- Be able to read and write the English language.
- Attend mandatory training classes.

Bilingual Election Workers are always needed (you must read and write both Spanish and English). For more information, please visit our website or call our office.

Applications are available online at ClayElections.gov

How to Mark Your Ballot



If using an optical scan ballot, you will fill in the oval next to your choice using a marking pen. Alternatively, on the Americans with Disabilities Act (ADA) machines, use the touchscreen to make your selection.

Sample Ballots are provided for your convenience. Use it to research the candidates and races, and mark your choices. You may bring it into the voting booth to use as a guide to mark your official ballot.

Voter's Responsibilities

Each registered voter in this state should:

1. Be familiar with the candidates and issues.
2. Maintain current information with the Elections Office.
3. Know the location and hours of his/her polling location.
4. Bring proper identification to the polls.
5. Treat Election Workers with courtesy.
6. Respect the privacy of others.
7. Ask questions if needed.
8. Make sure his/her completed ballot is correct before leaving the polling location.

NOTE: Failure to perform any of these responsibilities does not prohibit a voter from voting.

(Section 101.031, Florida Statutes)

Voter's Bill of Rights

Each registered voter in this state has the right to:

1. Vote and have his/her voice accurately counted.
2. Cast a vote if he/she is in line at the official closing time of the polls in your county.
3. Ask for and receive assistance in voting.
4. Receive up to two replacement ballots if he or she makes a mistake prior to the ballot being cast.
5. An explanation if his/her registration or identity is in question.
6. Cast a provisional ballot if his/her registration or identity is in question.
7. Written instructions to use when voting and, upon request, oral instructions in voting from Election Workers.
8. Vote free from coercion or intimidation by Election Workers or any other person.
9. Vote on a voting system that is in working condition and that will allow votes to be accurately cast.

(Section 101.031, Florida Statutes)

Clay County VOTING GUIDE 2025
Chris H. Chambless, CERA, MFCEP Supervisor of Elections
500 N. Orange Ave • PO Box 337 • Green Cove Springs, FL 32043
Monday - Friday • 8:30 AM - 4:30 PM • (904) 269 - 6350
ClayElections.gov

Who Can Register to Vote?

To register in Florida, you must:

- Be a citizen of the United States of America (A lawful permanent resident, commonly referred to as a "green card holder," does not have the right to register or vote in Florida.);
- Be a Florida resident;
- Be at least 18 years old (You may pre-register at age 16, but must be 18 to vote.);
- Not have been adjudicated mentally incapacitated with respect to voting in Florida or any other state, without having your right to vote restored.
- Not have been convicted of a felony without your civil rights having been restored.

(Section 97.041, Florida Statutes)

How to Register to Vote

Apply to register in any of the following:

- Online at RegistertoVoteFlorida.gov
- Apply through any of these agencies:
  - Supervisor of Elections Office
  - Driver's License offices
  - State Public Assistance offices
  - Public Libraries
  - Hunting/Fishing Licensing agents
  - County Government offices

Upcoming Elections

April 8, 2025- Municipal Super Tuesday Election
Last day to register to vote or change your party is March 10, 2025.

August 18, 2026- Primary Election
Last day to register to vote or change your party is July 20, 2026.

November 3, 2026- General Election
Last day to register to vote or change your party is October 5, 2026.

Voter Registration Application

A voter registration form is complete if it contains:

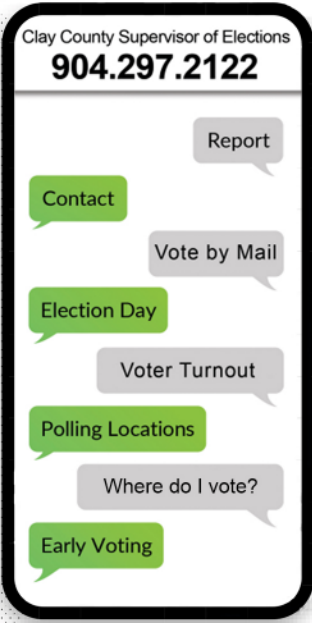
- An indication you are a U.S. citizen.
- An indication you have not been convicted of a felony, or, if convicted, your civil rights have been restored.
- An indication you have not been adjudicated mentally incapacitated with respect to voting, or, if so adjudicated, your right to vote has been restored.
- Your date of birth.
- Your Florida Driver License or Identification Card number, or if you do not have a FL DL or ID Card number, then you must provide the last four digits of your Social Security number.
- Your name.
- Your legal residence address.
- Your signature attesting to the oath printed on the form: swearing or affirming the information contained in the registration application.

Completed paper applications may be mailed or hand-delivered to the Elections Office for processing.



## Find Verified Election Information

Introducing **TextMyGov**, a messaging service that allows the public to send text messages 24/7 to the Elections Office using keywords that will trigger a response to a question or concern.



### Connect Via Text

Skip a phone call and use your mobile phone's text messaging service to report issues or find info on the go.

### 24/7 Assistance

Smart texting technology searches keywords to provide you with assistance anytime, day or night.

### Get Started

Text "Hi" to: **904.297.2122**

You can also get election updates sent directly to your phone.

Text the keyword **CLAYVOTES** to **91896** to get started.

Once you opt-in, you will receive election reminders from our office right to your phone via text.

## When to Register

You can register to vote at anytime. However, there is a 29 day deadline prior to each election for registering to vote or changing party affiliation. When the registration books are closed for an election, updates to a voter's name, address, and signature shall be the only changes permitted for the purpose of the upcoming election.

The date your Voter Registration form is postmarked or hand-delivered to any driver license office, the Division of Elections, or any Supervisor of Elections office will be your registration date (**Section 97.053, Florida Statutes**). If your Voter Registration form is complete and you're qualified as a voter, a Voter Information Card will be mailed to you.

Voter registration and party changes will be accepted after the deadline, but only for the purpose of subsequent elections.

## Voter Information Cards

After registering to vote, you'll be mailed a Voter Information Card. This card is informational only and can't be used as a form of ID at the polls. Once you receive it, please review the information on it. If there is an error, please contact the Elections Office.

## Update Your Voter Record

**It's your responsibility to notify the Elections Office if your record has changed.**

**If you've moved within the state of Florida, you may change your address:**

- Over the phone. You must provide your birthdate and FL Driver's License or Identification Card number, or the last four digits of your Social Security number.
- With a signed written note containing your birthdate and FL Driver's License or Identification Card number, or the last four digits of your Social Security number.
- Online at **RegistertoVoteFlorida.gov**
- By filling out and signing a Voter Registration form. Forms are available at the Elections Office, public libraries, Tax Collector's offices, and most government buildings, or can be printed online at **ClayElections.gov**

Registered Florida voters may perform an in-state address change on Election Day.

Name and party changes must be made by completing a Voter Registration form in writing or online at **RegistertoVoteFlorida.gov**

(Section 101.031, Florida Statutes)

If your signature has changed, please update it by filling out a Voter Registration form.

If you move from another state into Florida, you're considered a new registration. Please see **How to Register** for more information.

## Closed Primary State

### What does it mean?

**In a Closed Primary Election, voters are limited to choosing candidates of their own party.**

**If you choose the Democratic Party, you're allowed to vote only for Democratic candidates or non-partisan races.**

**If you choose the Republican Party, you're allowed to vote only for Republican candidates or non-partisan races.**

**If you choose a minor party or No Party Affiliation, you're allowed to vote only for the non-partisan races and referendums in the Primary Election.**

**NOTE:** A party change must be made on a Voter Registration form prior to the end of the 29th day before an election.

**NOTE:** An applicant who fails to designate a political party affiliation will be registered as No Party Affiliation (NPA).

**NOTE:** If all candidates for a race are affiliated with one party, and the decision will be made in the Primary Election, every registered voter will be allowed to cast a vote in that race. A Write-In Candidate would close the Primary to only party-affiliated voters.

## Polling Information

**Polls are open 7 AM to 7 PM. You must have photo and signature identification.**

Acceptable forms of identification:

- Florida Driver's License
- Florida ID card
- U.S. Passport
- Military ID
- Student ID
- Debit or credit card
- Neighborhood Association ID
- Public Assistance ID
- Retirement Center ID
- Veteran Health ID
- Concealed Weapon License
- Government Employee ID

**NOTE:** If you do not have proper ID, you must vote a Provisional Ballot.

(Section 101.043, Florida Statutes)

## Voting a Provisional

### What is a Provisional Ballot?

Provisional Ballots provide a safeguard to voters whose identity or eligibility is in question. Provisional Ballots may be issued at polling places on Election Day or at Early Vote sites.

Some reasons for issuing a Provisional Ballot:

- Voter does not show photo and signature ID when voting
- Voter status displays that ballot has already been cast by mail or during Early Voting
- Voter's eligibility status is in question
- A challenge has been made about the eligibility of a voter

The county Canvassing Board is responsible for examining the Provisional Ballot certificate and making a determination as to the voter's eligibility. A Provisional Ballot voter must be given notice of rights, including the right to show evidence of eligibility to vote. Evidence must be presented no later than 5 PM the second day following the election. Once eligibility has been determined, the Provisional Ballot will be counted.

## Vote by Mail

Any registered voter on file in Clay County may request a Vote by Mail ballot. If the ballot is to be mailed to an address other than the voter's address on file, the request must be made on a Vote by Mail Request Form. Military members and their dependents are exempt from this requirement. Request a Vote by Mail ballot over the phone, by filling out a Vote by Mail Request Form, or online at **ClayElections.gov**. The voter must disclose the following information:

- Voter's name
- Voter's address
- Voter's date of birth
- Voter's Florida driver license or ID card number, or the last four digits of the Social Security number
- Voter's signature (Vote by Mail Request Form only)

An immediate family member or legal guardian may request a Vote by Mail ballot for a voter. Immediate family member means the voter's spouse, or the parent, child, grandparent, grandchild, or sibling of the voter or the voter's spouse. The requester must provide the information above, plus the following information:

- Requester's name
- Requester's address
- Requester's Florida driver license or ID card number, or the last four digits of the Social Security number
- Requester's relationship to voter
- Requester's signature (Vote by Mail Request Form only)

Voters may request a mail ballot for a specific election or for all elections through the next General Election. The deadline to request a mail ballot is 12 days before Election Day. Vote by Mail ballots are sent 45 days before each election to absent uniformed and overseas (UOCAVA) voters who have requested them. Otherwise, mail ballots are mailed out between 40 and 33 days prior to each election. Ballots are mailed as non-forwardable and return-if-undeliverable mail to those voters who have requested one.

## Voting Your Mail Ballot

Follow the instructions included with your mail ballot very carefully! The voter must personally vote the ballot (unless assistance is required due to blindness, disability, or inability to read or write). The voter must sign the certificate envelope where indicated.

**POWER OF ATTORNEY MAY NEITHER SIGN FOR A VOTER NOR MAKE PARTY CHANGES.**